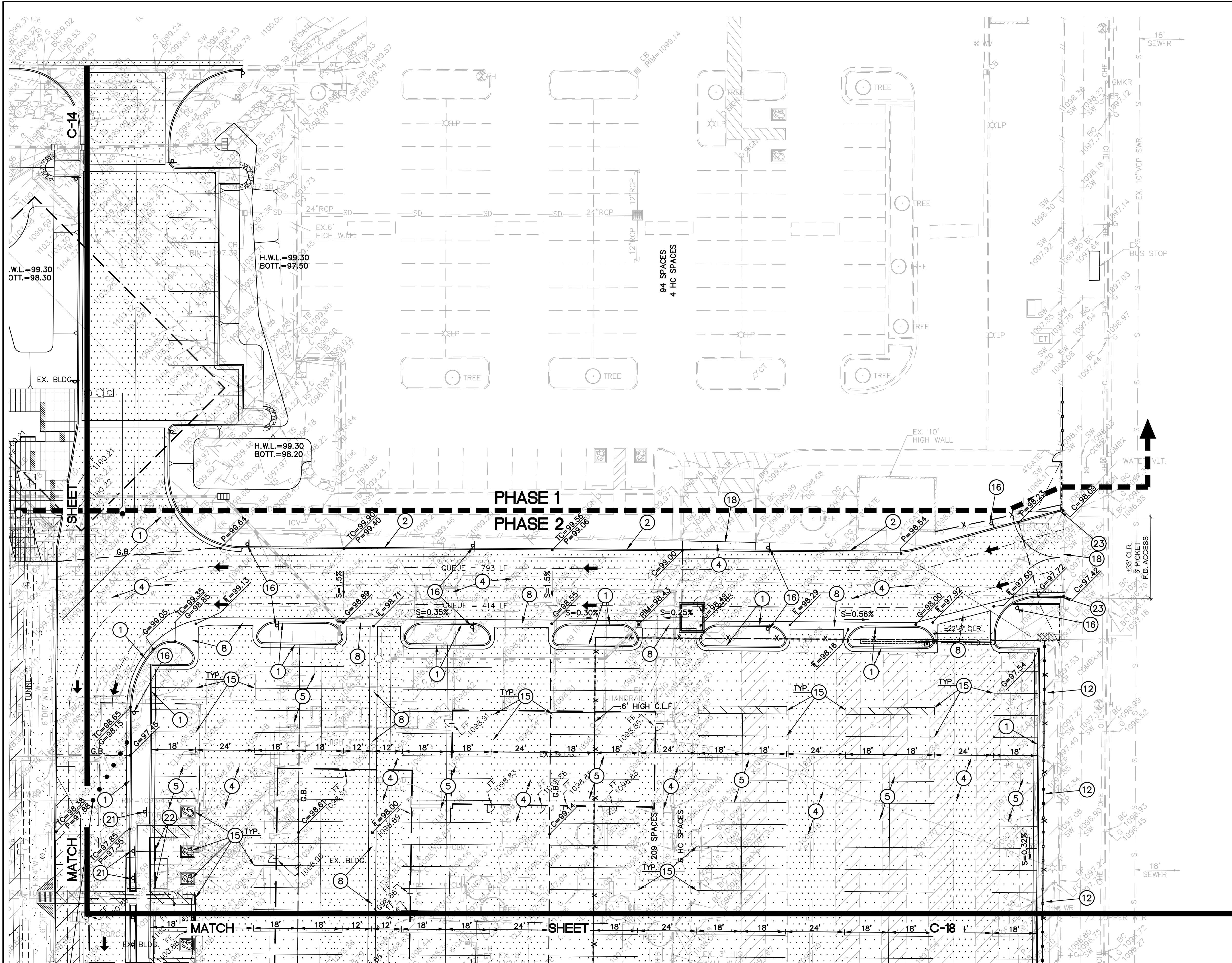


**GRADING AND DRAINAGE
CONSTRUCTION NOTES:**

- ① CONSTRUCT CONCRETE VERTICAL CURB AND GUTTER (MAG STANDARD DETAIL NO. 220-1, TYPE A).
- ② CONSTRUCT CONCRETE SINGLE CURB (MAG STANDARD DETAIL NO. 222, TYPE 'A').
- ③ INSTALL CONCRETE SIDEWALK RAMP, TYPE PER PLAN (SEE DETAIL ON SHEET C-3).
- ④ INSTALL ASPHALTIC CONCRETE PAVEMENT (3" A.C. (1/2" MIX) OVER 8" A.B.C. OVER COMPACTED SUBGRADE).
- ⑤ INSTALL ASPHALTIC CONCRETE PAVEMENT (2" A.C. (1/2" MIX) OVER 6" A.B.C. OVER COMPACTED SUBGRADE).
- ⑥ CONSTRUCT CONCRETE SIDEWALK (CITY OF PHOENIX STANDARD DETAIL NO. P1230). SEE LANDSCAPE DRAWINGS FOR SCORING AND FINISH.
- ⑦ INSTALL THICKENED PAVEMENT EDGE (MAG STANDARD DETAIL 201, TYPE B).
- ⑧ CONSTRUCT CONCRETE VALLEY GUTTER AND APRON (MAG STANDARD DETAIL NO. 240). WIDTH TO BE 3'.
- ⑨ CONSTRUCT SEVEN INCH (7") THICK 4,000 P.S.I. (AT 28 DAYS) CONCRETE PAVING OR CONCRETE FIRE LANE.
- ⑩ INSTALL DRAIN THROUGH LANDSCAPE AREA. (SEE DETAIL ON SHEET C-3).
- ⑪ INSTALL CONCRETE DRIVEWAY ENTRANCE (MAG STANDARD DETAIL 250-1).
- ⑫ STRAIGHT GRADE FROM 1" BELOW TOP OF CONCRETE SIDEWALK OR CURB AT A 5:1 MAXIMUM SLOPE TO MATCH EXISTING GRADE.
- ⑬ CONSTRUCT CONCRETE SPLASHPAD (SEE DETAIL SHEET C-3).
- ⑭ INSTALL TRASH ENCLOSURE (SEE ARCHITECTURAL DRAWINGS FOR DETAILS).
- ⑮ PAINT STRIPE PARKING LOT TO THE ALIGNMENTS INDICATED, INCLUDING THE PAINTING OF ALL HANDICAP SYMBOLS AND WALKWAYS, DIRECTIONAL ARROWS, PARKING STALLS, DROP-OFF AREAS, ETC. (TYPICAL).
- ⑯ INSTALL FIRE LANE SIGN PER CITY OF PHOENIX AND STATE FIRE MARSHAL'S REQUIREMENTS. POST AND BASE PER MAG STANDARD DETAIL NO. 131, TYPE 'B'.
- ⑰ INSTALL 12" SIDEWALK SCUPPER (MAG STANDARD DETAIL NO. 206).
- ⑱ MATCH EXISTING GRADE.
- ⑲ SEE LANDSCAPE PLANS FOR FENCING AND GATES.
- ⑳ INSTALL CONCRETE LANDSCAPE CURB (SEE LANDSCAPE PLANS FOR DETAILS).
- ㉑ INSTALL HANDICAP PARKING SIGN PER CITY OF PHOENIX AND ADA REQUIREMENTS. POST AND BASE PER MAG STANDARD DETAIL NO. 131, TYPE 'B'. (TOP OF SIGN SHALL BE 6" ABOVE GRADE). TYPICAL AT EACH HANDICAP SPACE.
- ㉒ INSTALL PRECAST SAFETY CURB (MAG STANDARD DETAIL NO. 150, TYPE B-3).
- ㉓ INSTALL CURB TERMINATION (MAG STANDARD DETAIL NO. 222).
- ㉔ INSTALL "DO NOT ENTER" SIGN (M.U.T.C.D. R5-1, 36" X 36", WITH POST AND BASE PER MAG STANDARD DETAIL NO. 131, TYPE 'B' (TOP OF SIGN SHALL BE 6" ABOVE GRADE)).

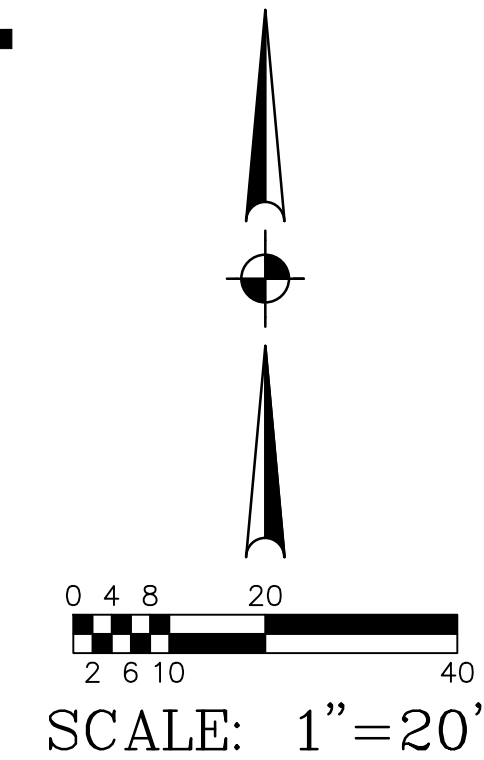




**GRADING AND DRAINAGE
CONSTRUCTION NOTES:**

- ① CONSTRUCT CONCRETE VERTICAL CURB AND GUTTER (MAG STANDARD DETAIL NO. 220-1, TYPE A).
- ② CONSTRUCT CONCRETE SINGLE CURB (MAG STANDARD DETAIL NO. 222, TYPE 'A').
- ③ INSTALL CONCRETE SIDEWALK RAMP, TYPE PER PLAN (SEE DETAIL ON SHEET C-3).
- ④ INSTALL ASPHALTIC CONCRETE PAVEMENT (3" A.C. (1/2" MIX) OVER 8" A.B.C. OVER COMPACTED SUBGRADE).
- ⑤ INSTALL ASPHALTIC CONCRETE PAVEMENT (2" A.C. (1/2" MIX) OVER 6" A.B.C. OVER COMPACTED SUBGRADE).
- ⑥ CONSTRUCT CONCRETE SIDEWALK (CITY OF PHOENIX STANDARD DETAIL NO. P1230). SEE LANDSCAPE DRAWINGS FOR SCORING AND FINISH.
- ⑦ INSTALL THICKENED PAVEMENT EDGE (MAG STANDARD DETAIL 201, TYPE B).
- ⑧ CONSTRUCT CONCRETE VALLEY GUTTER AND APRON (MAG STANDARD DETAIL NO. 240). WIDTH TO BE 3'.
- ⑨ CONSTRUCT SEVEN INCH (7") THICK 4,000 P.S.I. (AT 28 DAYS) CONCRETE PAVING OR CONCRETE FIRE LANE.
- ⑩ INSTALL DRAIN THROUGH LANDSCAPE AREA. (SEE DETAIL ON SHEET C-3).
- ⑪ INSTALL CONCRETE DRIVEWAY ENTRANCE (MAG STANDARD DETAIL 250-1).
- ⑫ STRAIGHT GRADE FROM 1" BELOW TOP OF CONCRETE SIDEWALK OR CURB AT A 5:1 MAXIMUM SLOPE TO MATCH EXISTING GRADE.
- ⑬ CONSTRUCT CONCRETE SPLASHPAD (SEE DETAIL SHEET C-3).
- ⑭ INSTALL TRASH ENCLOSURE (SEE ARCHITECTURAL DRAWINGS FOR DETAILS).
- ⑮ PAINT STRIPE PARKING LOT TO THE ALIGNMENTS INDICATED, INCLUDING THE PAINTING OF ALL HANDICAP SYMBOLS AND WALKWAYS, DIRECTIONAL ARROWS, PARKING STALLS, DROP-OFF AREAS, ETC. (TYPICAL).
- ⑯ INSTALL FIRE LANE SIGN PER CITY OF PHOENIX AND STATE FIRE MARSHAL'S REQUIREMENTS. POST AND BASE PER MAG STANDARD DETAIL NO. 131, TYPE 'B'.
- ⑰ INSTALL 12" SIDEWALK SCUPPER (MAG STANDARD DETAIL NO. 206).
- ⑱ MATCH EXISTING GRADE.
- ⑲ SEE LANDSCAPE PLANS FOR FENCING AND GATES.
- ⑳ INSTALL CONCRETE LANDSCAPE CURB (SEE LANDSCAPE PLANS FOR DETAILS).
- ㉑ INSTALL HANDICAP PARKING SIGN PER CITY OF PHOENIX AND ADA REQUIREMENTS. POST AND BASE PER MAG STANDARD DETAIL NO. 131, TYPE 'B'. (TOP OF SIGN SHALL BE 6" ABOVE GRADE). TYPICAL AT EACH HANDICAP SPACE.
- ㉒ INSTALL PRECAST SAFETY CURB (MAG STANDARD DETAIL NO. 150, TYPE B-3).
- ㉓ INSTALL CURB TERMINATION (MAG STANDARD DETAIL NO. 222).
- ㉔ INSTALL "DO NOT ENTER" SIGN (M.U.T.C.D. R5-1, 36" X 36", WITH POST AND BASE PER MAG STANDARD DETAIL NO. 131, TYPE 'B' (TOP OF SIGN SHALL BE 6" ABOVE GRADE)).

8" WHITE ROUND
1 WAY CERAMIC
BUTTON (PC MODEL
RPMMCB(X)W
(TYP. 7 EA.)



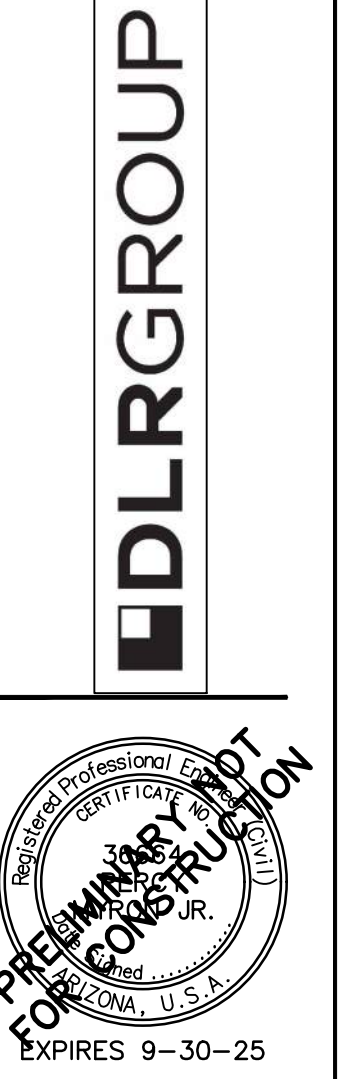
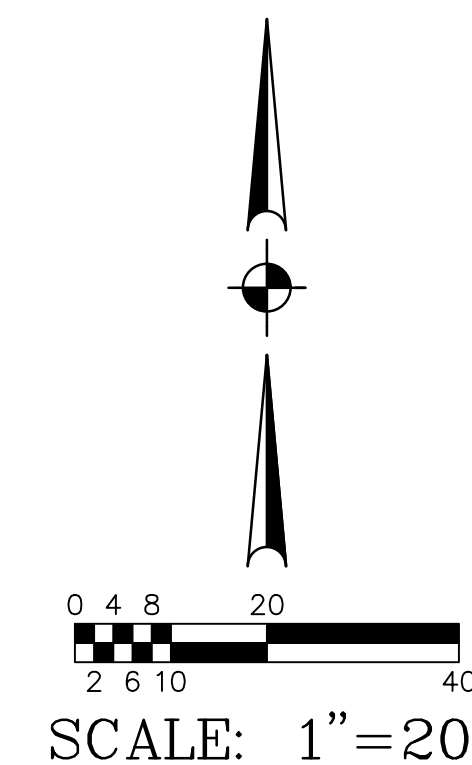
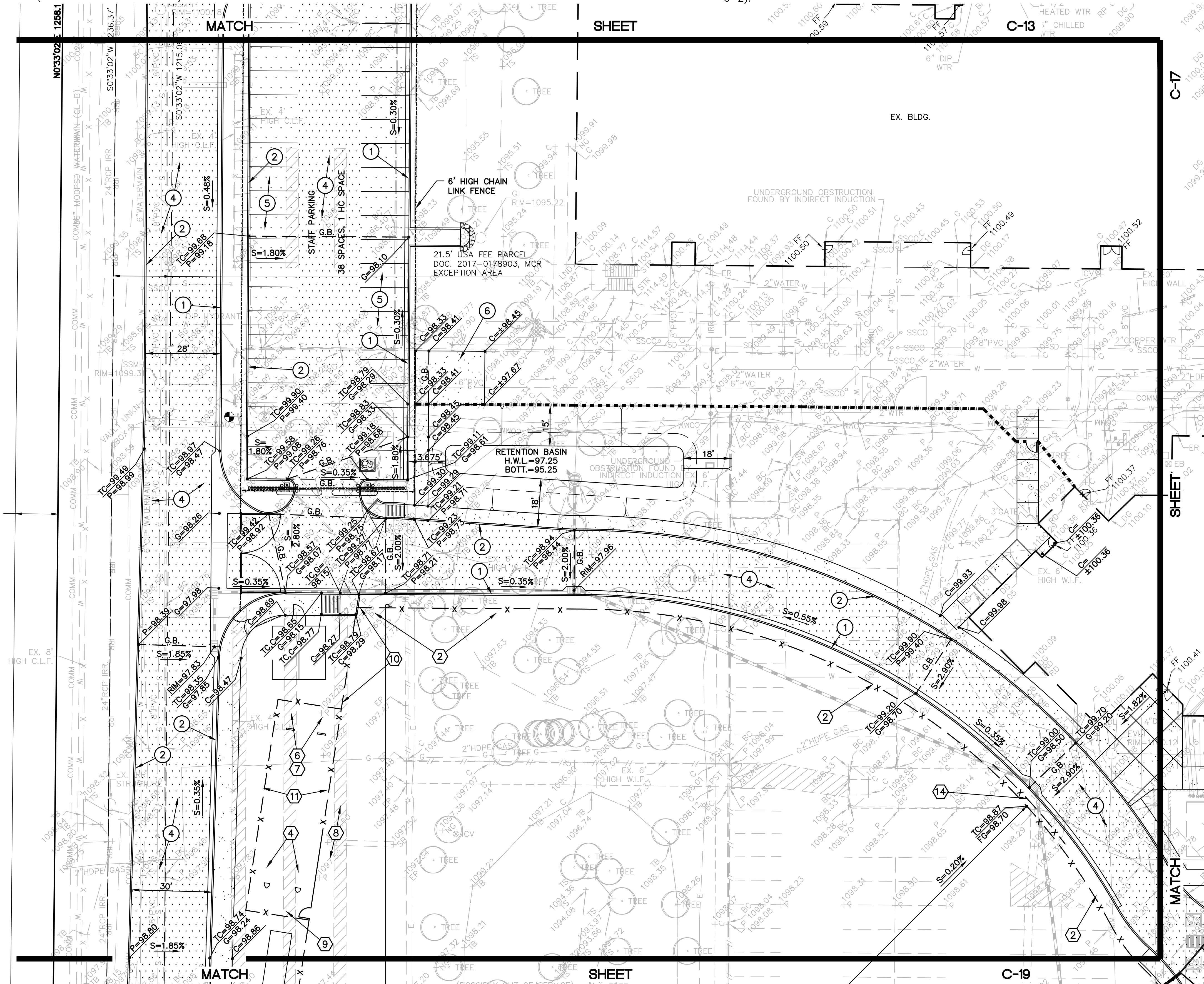
FENCING CONSTRUCTION NOTES:

- ① INSTALL 24-FOOT HIGH CHAIN LINK FENCE WITH PLASTIC BASEBOARD (SEE DETAIL ON SHEET C-2). INSTALL BASEBOARDS AROUND BACKSTOP AND STOP AT DUGOUT. INSTALL 10" WIDE BY 8" DEEP CONCRETE CURB BENEATH FENCE. TOP OF CURB TO BE 1" ABOVE FINISHED GRADE.
- ② INSTALL 6-FOOT HIGH CHAIN LINK FENCE WITH PRIVACY SLATS AND A 6" WIDE BY 8" DEEP CONCRETE CURB BENEATH FENCE. TOP OF CURB TO BE 2" ABOVE FINISHED GRADE, EXCEPT AT CONCRETE SPLASHPAD WHERE TOP OF CURB ELEVATION IS EQUAL TO THE FINISH GRADE ELEVATION.
- ③ INSTALL BUILDING DUGOUT (SEE ARCHITECTURAL DRAWINGS FOR DETAILS).
- ④ INSTALL HOME PLATE, SCHUTT HOLLYWOOD BURY ALL HOME PLATE (#12807100) OR ENGINEER APPROVED EQUAL (SEE DETAIL ON SHEET C-2).
- ⑤ INSTALL BASE, SCHUTT BBPLS ORIGINAL JACK CORBETT HOLLYWOOD BASE W/ANCHORS. SCHUTT ANCHOR PLUG W/COLORED INDICATORS OR APPROVED EQUAL (SEE DETAIL ON SHEET C-2).
- ⑥ INSTALL PITCHING MOUND RUBBER, SCHUTT 4-SIDED PROFESSIONAL PITCHING RUBBER (#12808500 OR ENGINEER APPROVED EQUAL (SEE DETAIL ON SHEET C-2).
- ⑦ CONSTRUCT PITCHERS MOUND (SEE DETAIL ON SHEET C-2).
- ⑧ INSTALL 4" THICK INFIELD MIX. (SEE LANDSCAPE DRAWINGS).
- ⑨ INSTALL 8-FOOT HIGH BY 4-FOOT WIDE CHAIN LINK GATE WITH PRIVACY SLATS. INSTALL 6" WIDE BY 8" DEEP CONCRETE CURB BENEATH GATE.

- ⑩ INSTALL 8-FOOT HIGH CHAIN LINK FENCE WITH PRIVACY SLATS AND A 6" WIDE BY 8" DEEP CONCRETE CURB BENEATH FENCE. TOP OF CURB TO BE 1" ABOVE FINISHED GRADE, EXCEPT AT THE END NEAR THE OUTFIELD FENCE WHERE IT TRANSITIONS IN 28-FEET TO BE 2" ABOVE FINISH GRADE.
- ⑪ INSTALL BATTING CAGE (SEE DETAIL ON SHEET C-2). INSTALL NET PER JUGSPORT BATTING CAGE #9 100'L X 18'W X 12'H #96 TWISTED KNOTTED BLACK POLYESTER.
- ⑫ INSTALL 8-FOOT HIGH BY 8-FOOT WIDE CHAIN LINK DOUBLE SWING GATE. INSTALL 6" WIDE BY 8" DEEP CONCRETE CURB BENEATH GATE.
- ⑬ INSTALL 8-FOOT HIGH BY 12-FOOT WIDE CHAIN LINK DOUBLE SWING GATE. INSTALL 6" WIDE BY 8" DEEP CONCRETE CURB BENEATH GATE.
- ⑭ CONSTRUCT FENCE BLACKOUT (SEE DETAIL ON SHEET C-2).
- ⑮ INSTALL FOUL POLE (SEE DETAIL ON SHEET C-2).

GRADING AND DRAINAGE CONSTRUCTION NOTES:

- ① CONSTRUCT CONCRETE VERTICAL CURB AND GUTTER (MAG STANDARD DETAIL NO. 220-1, TYPE A).
- ② CONSTRUCT CONCRETE SINGLE CURB (MAG STANDARD DETAIL NO. 222, TYPE 'A').
- ③ INSTALL CONCRETE SIDEWALK RAMP, TYPE PER PLAN (SEE DETAIL ON SHEET C-3).
- ④ INSTALL ASPHALTIC CONCRETE PAVEMENT (3" A.C. (1/2" MIX) OVER 8" A.B.C. OVER COMPACTED SUBGRADE).
- ⑤ INSTALL ASPHALTIC CONCRETE PAVEMENT (2" A.C. (1/2" MIX) OVER 6" A.B.C. OVER COMPACTED SUBGRADE).
- ⑥ CONSTRUCT CONCRETE SIDEWALK (CITY OF PHOENIX STANDARD DETAIL NO. P1230). SEE LANDSCAPE DRAWINGS FOR SCORING AND FINISH.
- ⑦ INSTALL THICKENED PAVEMENT EDGE (MAG STANDARD DETAIL 201, TYPE B).
- ⑧ CONSTRUCT CONCRETE VALLEY GUTTER AND APRON (MAG STANDARD DETAIL NO. 240). WIDTH TO BE 3'.
- ⑨ CONSTRUCT SEVEN INCH (7") THICK 4,000 P.S.I. (AT 28 DAYS) CONCRETE PAVING OR CONCRETE FIRE LANE.
- ⑩ INSTALL DRAIN THROUGH LANDSCAPE AREA. (SEE DETAIL ON SHEET C-3).
- ⑪ INSTALL CONCRETE DRIVEWAY ENTRANCE (MAG STANDARD DETAIL 250-1).
- ⑫ STRAIGHT GRADE FROM 1" BELOW TOP OF CONCRETE SIDEWALK OR CURB AT A 5:1 MAXIMUM SLOPE TO MATCH EXISTING GRADE.
- ⑬ CONSTRUCT CONCRETE SPLASHPAD (SEE DETAIL SHEET C-3).
- ⑭ INSTALL TRASH ENCLOSURE (SEE ARCHITECTURAL DRAWINGS FOR DETAILS).
- ⑮ PAINT STRIPE PARKING LOT TO THE ALIGNMENTS INDICATED, INCLUDING THE PAINTING OF ALL HANDICAP SYMBOLS AND WALKWAYS, DIRECTIONAL ARROWS, PARKING STALLS, DROP-OFF AREAS, ETC. (TYPICAL).
- ⑯ INSTALL FIRE LANE SIGN PER CITY OF PHOENIX AND STATE FIRE MARSHAL'S REQUIREMENTS. POST AND BASE PER MAG STANDARD DETAIL NO. 131, TYPE 'B'.
- ⑰ INSTALL 12" SIDEWALK SCUPPER (MAG STANDARD DETAIL NO. 206).
- ⑱ MATCH EXISTING GRADE.
- ⑲ SEE LANDSCAPE PLANS FOR FENCING AND GATES.
- ⑳ INSTALL CONCRETE LANDSCAPE CURB (SEE LANDSCAPE PLANS FOR DETAILS).
- ㉑ INSTALL HANDICAP PARKING SIGN PER CITY OF PHOENIX AND ADA REQUIREMENTS. POST AND BASE PER MAG STANDARD DETAIL NO. 131, TYPE 'B'. (TOP OF SIGN SHALL BE 6" ABOVE GRADE). TYPICAL AT EACH HANDICAP SPACE.
- ㉒ INSTALL PRECAST SAFETY CURB (MAG STANDARD DETAIL NO. 150, TYPE B-3).
- ㉓ INSTALL CURB TERMINATION (MAG STANDARD DETAIL NO. 222).
- ㉔ INSTALL "DO NOT ENTER" SIGN (M.U.T.C.D. R5-1, 36" X 36", WITH POST AND BASE PER MAG STANDARD DETAIL NO. 131, TYPE 'B' (TOP OF SIGN SHALL BE 6" ABOVE GRADE)).



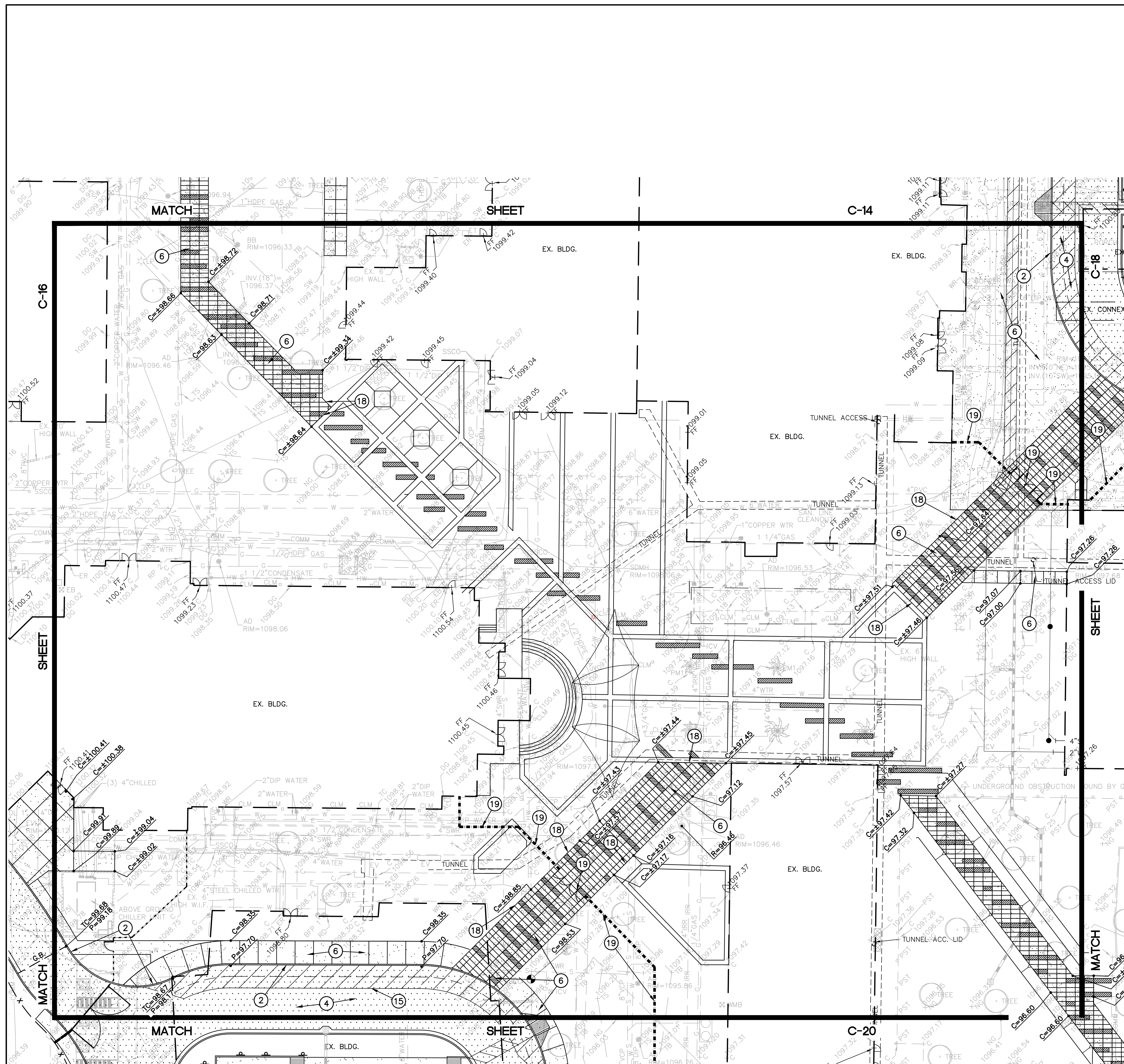
Bowman
 Bowman Consulting Group Ltd
 1600 N. Desert Drive, Ste 210
 Tempe, Arizona 85288
 Phone: (480) 629-8830
 www.bowman.com

METRO TECH - PH2
 PHOENIX UNION HIGH SCHOOL DISTRICT

BIDDING SET
 05-30-25
 Revisions

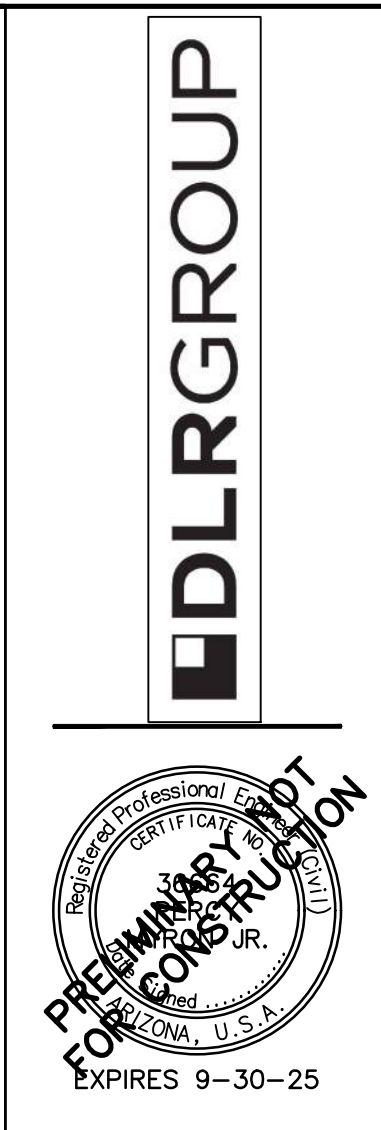
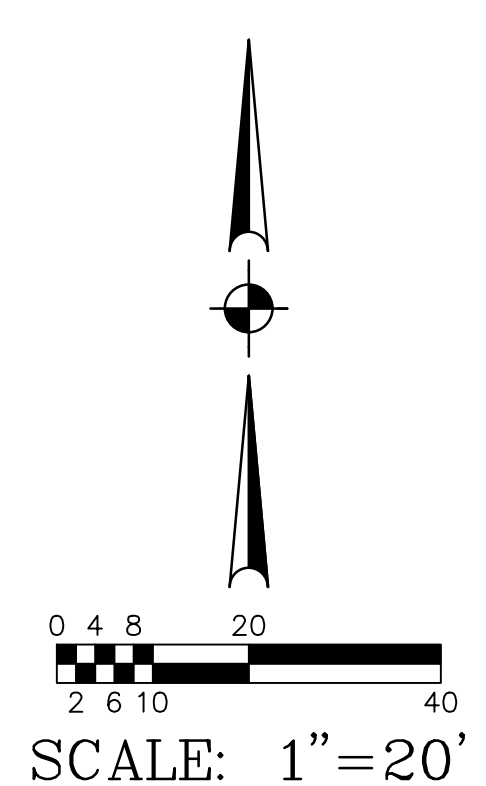
4503366B





**GRADING AND DRAINAGE
CONSTRUCTION NOTES:**

- ① CONSTRUCT CONCRETE VERTICAL CURB AND GUTTER (MAG STANDARD DETAIL NO. 220-1, TYPE A).
- ② CONSTRUCT CONCRETE SINGLE CURB (MAG STANDARD DETAIL NO. 222, TYPE 'A').
- ③ INSTALL CONCRETE SIDEWALK RAMP, TYPE PER PLAN (SEE DETAIL ON SHEET C-3).
- ④ INSTALL ASPHALTIC CONCRETE PAVEMENT (3" A.C. (1/2" MIX) OVER 8" A.B.C. OVER COMPACTED SUBGRADE).
- ⑤ INSTALL ASPHALTIC CONCRETE PAVEMENT (2" A.C. (1/2" MIX) OVER 6" A.B.C. OVER COMPACTED SUBGRADE).
- ⑥ CONSTRUCT CONCRETE SIDEWALK (CITY OF PHOENIX STANDARD DETAIL NO. P1230). SEE LANDSCAPE DRAWINGS FOR SCORING AND FINISH.
- ⑦ INSTALL THICKENED PAVEMENT EDGE (MAG STANDARD DETAIL 201, TYPE B).
- ⑧ CONSTRUCT CONCRETE VALLEY GUTTER AND APRON (MAG STANDARD DETAIL NO. 240). WIDTH TO BE 3'.
- ⑨ CONSTRUCT SEVEN INCH (7") THICK 4,000 P.S.I. (AT 28 DAYS) CONCRETE PAVING OR CONCRETE FIRE LANE.
- ⑩ INSTALL DRAIN THROUGH LANDSCAPE AREA. (SEE DETAIL ON SHEET C-3).
- ⑪ INSTALL CONCRETE DRIVEWAY ENTRANCE (MAG STANDARD DETAIL 250-1).
- ⑫ STRAIGHT GRADE FROM 1" BELOW TOP OF CONCRETE SIDEWALK OR CURB AT A 5:1 MAXIMUM SLOPE TO MATCH EXISTING GRADE.
- ⑬ CONSTRUCT CONCRETE SPLASHPAD (SEE DETAIL SHEET C-3).
- ⑭ INSTALL TRASH ENCLOSURE (SEE ARCHITECTURAL DRAWINGS FOR DETAILS).
- ⑮ PAINT STRIPE PARKING LOT TO THE ALIGNMENTS INDICATED, INCLUDING THE PAINTING OF ALL HANDICAP SYMBOLS AND WALKWAYS, DIRECTIONAL ARROWS, PARKING STALLS, DROP-OFF AREAS, ETC. (TYPICAL).
- ⑯ INSTALL FIRE LANE SIGN PER CITY OF PHOENIX AND STATE FIRE MARSHAL'S REQUIREMENTS. POST AND BASE PER MAG STANDARD DETAIL NO. 131, TYPE 'B'.
- ⑰ INSTALL 12" SIDEWALK SCUPPER (MAG STANDARD DETAIL NO. 206).
- ⑱ MATCH EXISTING GRADE.
- ⑲ SEE LANDSCAPE PLANS FOR FENCING AND GATES.
- ⑳ INSTALL CONCRETE LANDSCAPE CURB (SEE LANDSCAPE PLANS FOR DETAILS).
- ㉑ INSTALL HANDICAP PARKING SIGN PER CITY OF PHOENIX AND ADA REQUIREMENTS. POST AND BASE PER MAG STANDARD DETAIL NO. 131, TYPE 'B'. (TOP OF SIGN SHALL BE 6' ABOVE GRADE). TYPICAL AT EACH HANDICAP SPACE.
- ㉒ INSTALL PRECAST SAFETY CURB (MAG STANDARD DETAIL NO. 150, TYPE B-3).
- ㉓ INSTALL CURB TERMINATION (MAG STANDARD DETAIL NO. 222).
- ㉔ INSTALL "DO NOT ENTER" SIGN (M.U.T.C.D. R5-1, 36" X 36", WITH POST AND BASE PER MAG STANDARD DETAIL NO. 131, TYPE 'B' (TOP OF SIGN SHALL BE 6' ABOVE GRADE)).



Bowman
Bowman Consulting Group Ltd
1600 N. Desert Drive, Ste 210
Tempe, Arizona 85288
Phone: (480) 629-8830
www.bowman.com

METRO TECH - PH2
PHOENIX UNION HIGH SCHOOL DISTRICT

BIDDING SET
05-30-25
Revisions

450336B



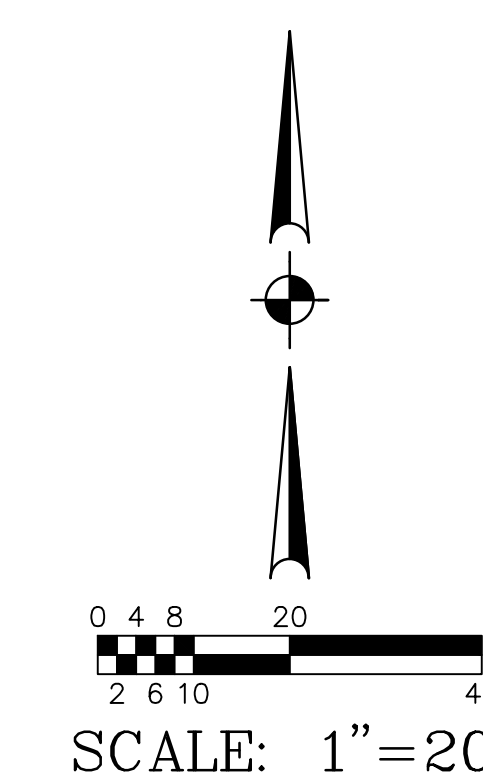
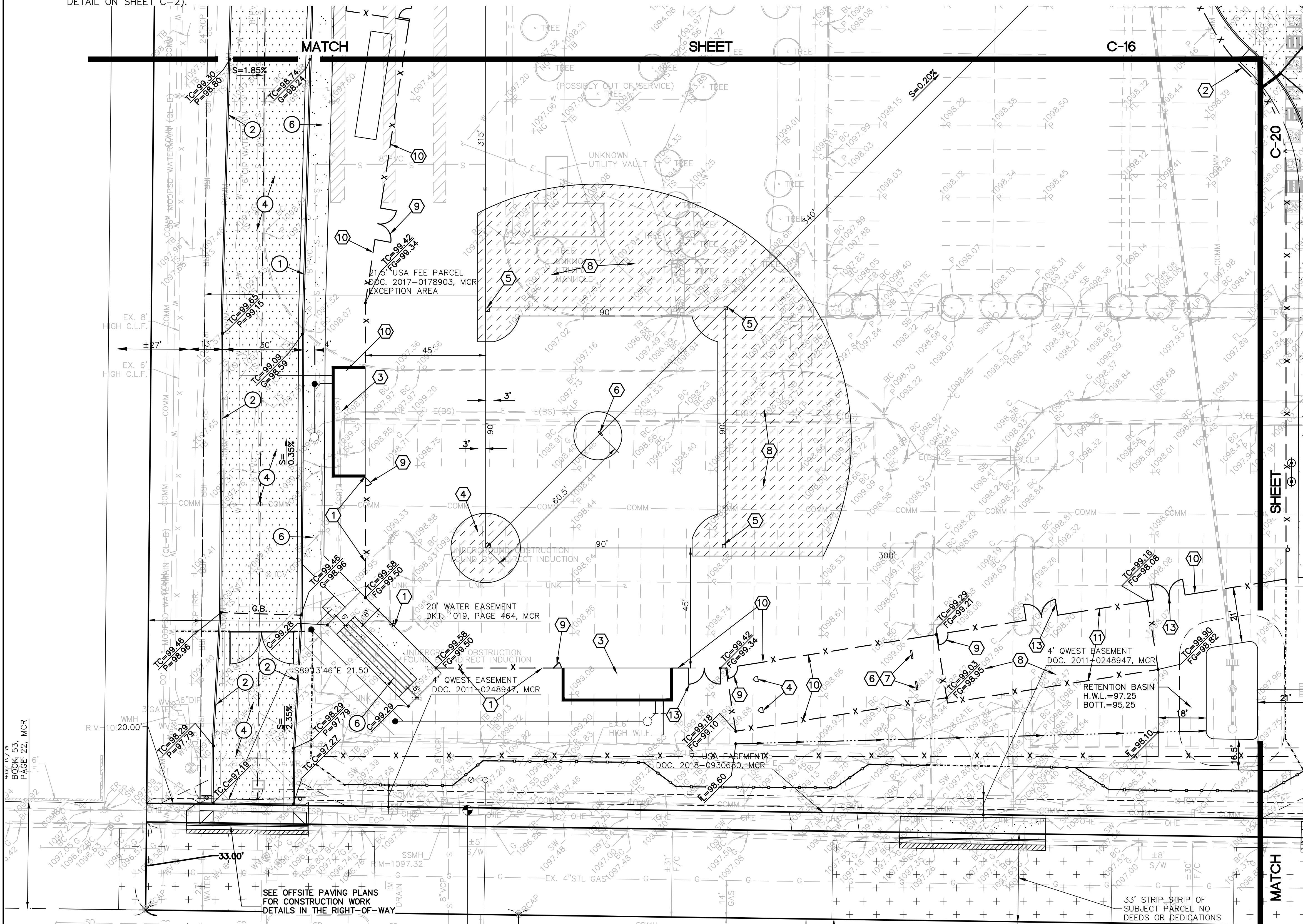
FENCING CONSTRUCTION NOTES:

- ① INSTALL 24-FOOT HIGH CHAIN LINK FENCE WITH PLASTIC BASEBOARD (SEE DETAIL ON SHEET C-2). INSTALL BASEBOARDS AROUND BACKSTOP AND STOP AT DUGOUT. INSTALL 10" WIDE BY 8" DEEP CONCRETE CURB BENEATH FENCE. TOP OF CURB TO BE 1" ABOVE FINISHED GRADE.
- ② INSTALL 6-FOOT HIGH CHAIN LINK FENCE WITH PRIVACY SLATS AND A 6" WIDE BY 8" DEEP CONCRETE CURB BENEATH FENCE. TOP OF CURB TO BE 2" ABOVE FINISHED GRADE, EXCEPT AT CONCRETE SPLASHPAD WHERE TOP OF CURB ELEVATION IS EQUAL TO THE FINISH GRADE ELEVATION.
- ③ INSTALL BUILDING DUGOUT (SEE ARCHITECTURAL DRAWINGS FOR DETAILS).
- ④ INSTALL HOME PLATE, SCHUTT HOLLYWOOD BURY ALL HOME PLATE (#12807100) OR ENGINEER APPROVED EQUAL (SEE DETAIL ON SHEET C-2).
- ⑤ INSTALL BASE, SCHUTT BBPLS ORIGINAL JACK CORBETT HOLLYWOOD BASE W/ANCHORS. SCHUTT ANCHOR PLUG W/COLORED INDICATORS OR APPROVED EQUAL (SEE DETAIL ON SHEET C-2).
- ⑥ INSTALL PITCHING MOUND RUBBER, SCHUTT 4-SIDED PROFESSIONAL PITCHING RUBBER (#12808500 OR ENGINEER APPROVED EQUAL (SEE DETAIL ON SHEET C-2).
- ⑦ CONSTRUCT PITCHERS MOUND (SEE DETAIL ON SHEET C-2).
- ⑧ INSTALL 4" THICK INFIELD MIX. (SEE LANDSCAPE DRAWINGS).
- ⑨ INSTALL 8-FOOT HIGH BY 4-FOOT WIDE CHAIN LINK GATE WITH PRIVACY SLATS. INSTALL 6" WIDE BY 8" DEEP CONCRETE CURB BENEATH GATE.
- ⑩ INSTALL 8-FOOT HIGH CHAIN LINK FENCE WITH PRIVACY SLATS AND A 6" WIDE BY 8" DEEP CONCRETE CURB BENEATH FENCE. TOP OF CURB TO BE 1" ABOVE FINISHED GRADE, EXCEPT AT THE END NEAR THE OUTFIELD FENCE WHERE IT TRANSITIONS IN 28- FEET TO BE 2" ABOVE FINISH GRADE.

- ⑩ INSTALL 8-FOOT HIGH CHAIN LINK FENCE WITH PRIVACY SLATS AND A 6" WIDE BY 8" DEEP CONCRETE CURB BENEATH FENCE. TOP OF CURB TO BE 1" ABOVE FINISHED GRADE, EXCEPT AT THE END NEAR THE OUTFIELD FENCE WHERE IT TRANSITIONS IN 28- FEET TO BE 2" ABOVE FINISH GRADE.
- ⑪ INSTALL BATTING CAGE (SEE DETAIL ON SHEET C-2). INSTALL NET PER JUGSPORT BATTING CAGE #9 100'L X 18'W X 12'H #96 TWISTED KNOTTED BLACK POLYESTER.
- ⑫ INSTALL 8-FOOT HIGH BY 8-FOOT WIDE CHAIN LINK DOUBLE SWING GATE. INSTALL 6" WIDE BY 8" DEEP CONCRETE CURB BENEATH GATE.
- ⑬ INSTALL 8-FOOT HIGH BY 12-FOOT WIDE CHAIN LINK DOUBLE SWING GATE. INSTALL 6" WIDE BY 8" DEEP CONCRETE CURB BENEATH GATE.
- ⑭ CONSTRUCT FENCE BLACKOUT (SEE DETAIL ON SHEET C-2).
- ⑮ INSTALL FOUL POLE (SEE DETAIL ON SHEET C-2).

GRADING AND DRAINAGE CONSTRUCTION NOTES:

- ① CONSTRUCT CONCRETE VERTICAL CURB AND GUTTER (MAG STANDARD DETAIL NO. 220-1, TYPE A).
- ② CONSTRUCT CONCRETE SINGLE CURB (MAG STANDARD DETAIL NO. 222, TYPE 'A').
- ③ INSTALL CONCRETE SIDEWALK RAMP, TYPE PER PLAN (SEE DETAIL ON SHEET C-3).
- ④ INSTALL ASPHALTIC CONCRETE PAVEMENT (3" A.C. (1/2" MIX) OVER 8" A.B.C. OVER COMPACTED SUBGRADE).
- ⑤ INSTALL ASPHALTIC CONCRETE PAVEMENT (2" A.C. (1/2" MIX) OVER 6" A.B.C. OVER COMPACTED SUBGRADE).
- ⑥ CONSTRUCT CONCRETE SIDEWALK (CITY OF PHOENIX STANDARD DETAIL NO. P1230). SEE LANDSCAPE DRAWINGS FOR SCORING AND FINISH.
- ⑦ INSTALL THICKENED PAVEMENT EDGE (MAG STANDARD DETAIL 201, TYPE B).
- ⑧ CONSTRUCT CONCRETE VALLEY GUTTER AND APRON (MAG STANDARD DETAIL NO. 240). WIDTH TO BE 3'.
- ⑨ CONSTRUCT SEVEN INCH (7") THICK 4,000 P.S.I. (AT 28 DAYS) CONCRETE PAVING OR CONCRETE FIRE LANE.
- ⑩ INSTALL DRAIN THROUGH LANDSCAPE AREA. (SEE DETAIL ON SHEET C-3).
- ⑪ INSTALL CONCRETE DRIVEWAY ENTRANCE (MAG STANDARD DETAIL 250-1).
- ⑫ STRAIGHT GRADE FROM 1" BELOW TOP OF CONCRETE SIDEWALK OR CURB AT A 5:1 MAXIMUM SLOPE TO MATCH EXISTING GRADE.
- ⑬ CONSTRUCT CONCRETE SPLASHPAD (SEE DETAIL SHEET C-3).
- ⑭ INSTALL TRASH ENCLOSURE (SEE ARCHITECTURAL DRAWINGS FOR DETAILS).
- ⑮ PAINT STRIPE PARKING LOT TO THE ALIGNMENTS INDICATED, INCLUDING THE PAINTING OF ALL HANDICAP SYMBOLS AND WALKWAYS, DIRECTIONAL ARROWS, PARKING STALLS, DROP-OFF AREAS, ETC. (TYPICAL).
- ⑯ INSTALL FIRE LANE SIGN PER CITY OF PHOENIX AND STATE FIRE MARSHAL'S REQUIREMENTS. POST AND BASE PER MAG STANDARD DETAIL NO. 131, TYPE 'B'.
- ⑰ INSTALL 12" SIDEWALK SCUPPER (MAG STANDARD DETAIL NO. 206).
- ⑱ MATCH EXISTING GRADE.
- ⑲ SEE LANDSCAPE PLANS FOR FENCING AND GATES.
- ⑳ INSTALL CONCRETE LANDSCAPE CURB (SEE LANDSCAPE PLANS FOR DETAILS).
- ㉑ INSTALL HANDICAP PARKING SIGN PER CITY OF PHOENIX AND ADA REQUIREMENTS. POST AND BASE PER MAG STANDARD DETAIL NO. 131, TYPE 'B'. (TOP OF SIGN SHALL BE 6" ABOVE GRADE). TYPICAL AT EACH HANDICAP SPACE.
- ㉒ INSTALL PRECAST SAFETY CURB (MAG STANDARD DETAIL NO. 150, TYPE B-3).
- ㉓ INSTALL CURB TERMINATION (MAG STANDARD DETAIL NO. 222).



NOTE:
SEE LANDSCAPE PLANS FOR ADDITIONAL CONCRETE SIDEWALK.



DLRGROUP

Professional Engineer
David J. Aronson
No. 12807100
State of Arizona
Expires 9-30-25

Bowman
Bowman Consulting Group Ltd
1600 N. Desert Drive, Ste 210
Tempe, Arizona 85288
Phone: (480) 629-8830
www.bowman.com

METRO TECH - PH2
PHOENIX UNION HIGH SCHOOL DISTRICT

BIDDING SET
05-30-25
Revisions

4503366B

19 OF 27
C-19

4503366B - C08.rvt

FENCING CONSTRUCTION NOTES:

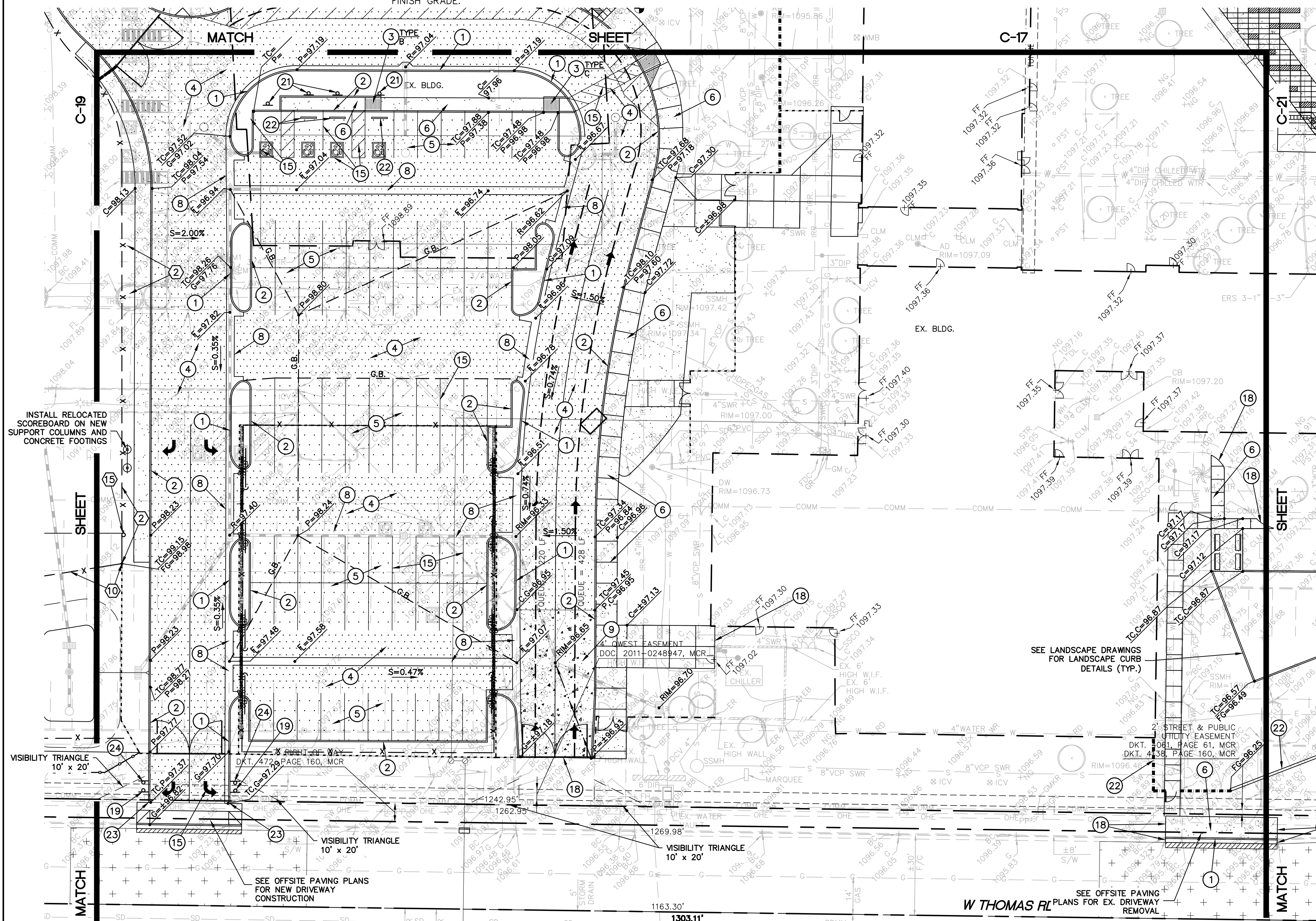
- ① INSTALL 24-FOOT HIGH CHAIN LINK FENCE WITH PLASTIC BASEBOARD (SEE DETAIL ON SHEET C-2). INSTALL BASEBOARDS AROUND BACKSTOP AND STOP AT DUGOUT. INSTALL 10" WIDE BY 8" DEEP CONCRETE CURB BENEATH FENCE. TOP OF CURB TO BE 1" ABOVE FINISHED GRADE.
- ② INSTALL 6-FOOT HIGH CHAIN LINK FENCE WITH PRIVACY SLATS AND A 6" WIDE BY 8" DEEP CONCRETE CURB BENEATH FENCE. TOP OF CURB TO BE 2" ABOVE FINISHED GRADE, EXCEPT AT CONCRETE SPLASHPAD WHERE TOP OF CURB ELEVATION IS EQUAL TO THE FINISH GRADE ELEVATION.
- ③ INSTALL BUILDING DUGOUT (SEE ARCHITECTURAL DRAWINGS FOR DETAILS).
- ④ INSTALL HOME PLATE, SCHUTT HOLLYWOOD BURY ALL HOME PLATE (#12807100) OR ENGINEER APPROVED EQUAL (SEE DETAIL ON SHEET C-2).

- ⑤ INSTALL BASE, SCHUTT BBPLS ORIGINAL JACK CORBETT HOLLYWOOD BASE W/ANCHORS. SCHUTT ANCHOR PLUG W/COLORED INDICATORS OR APPROVED EQUAL (SEE DETAIL ON SHEET C-2).
- ⑥ INSTALL PITCHING MOUND RUBBER, SCHUTT 4-SIDED PROFESSIONAL PITCHING RUBBER (#12808500 OR ENGINEER APPROVED EQUAL (SEE DETAIL ON SHEET C-2).
- ⑦ CONSTRUCT PITCHERS MOUND (SEE DETAIL ON SHEET C-2).
- ⑧ INSTALL 4" THICK INFIELD MIX. (SEE LANDSCAPE DRAWINGS).
- ⑨ INSTALL 8-FOOT HIGH BY 4-FOOT WIDE CHAIN LINK GATE WITH PRIVACY SLATS. INSTALL 6" WIDE BY 8" DEEP CONCRETE CURB BENEATH GATE.
- ⑩ INSTALL 8-FOOT HIGH CHAIN LINK FENCE WITH PRIVACY SLATS AND A 6" WIDE BY 8" DEEP CONCRETE CURB BENEATH FENCE. TOP OF CURB TO BE 1" ABOVE FINISHED GRADE, EXCEPT AT THE END NEAR THE OUTFIELD FENCE WHERE IT TRANSITIONS IN 28-FEET TO BE 2" ABOVE FINISH GRADE.

- ⑪ INSTALL BATTING CAGE (SEE DETAIL ON SHEET C-2). INSTALL NET PER JUGSPORT BATTING CAGE #9 100'L X 18'W X 12'H #96 TWISTED KNOTTED BLACK POLYESTER.
- ⑫ INSTALL 8-FOOT HIGH BY 8-FOOT WIDE CHAIN LINK DOUBLE SWING GATE. INSTALL 6" WIDE BY 8" DEEP CONCRETE CURB BENEATH GATE.
- ⑬ INSTALL 8-FOOT HIGH BY 12-FOOT WIDE CHAIN LINK DOUBLE SWING GATE. INSTALL 6" WIDE BY 8" DEEP CONCRETE CURB BENEATH GATE.
- ⑭ CONSTRUCT FENCE BLACKOUT (SEE DETAIL ON SHEET C-2).
- ⑮ INSTALL FOUL POLE (SEE DETAIL ON SHEET C-2).

GRADING AND DRAINAGE CONSTRUCTION NOTES:

- ① CONSTRUCT CONCRETE VERTICAL CURB AND GUTTER (MAG STANDARD DETAIL NO. 220-1, TYPE A).
- ② CONSTRUCT CONCRETE SINGLE CURB (MAG STANDARD DETAIL NO. 222, TYPE 'A').
- ③ INSTALL CONCRETE SIDEWALK RAMP, TYPE PER PLAN (SEE DETAIL ON SHEET C-3).
- ④ INSTALL ASPHALTIC CONCRETE PAVEMENT (3" A.C. (1/2" MIX) OVER 8" A.B.C. OVER COMPACTED SUBGRADE).
- ⑤ INSTALL ASPHALTIC CONCRETE PAVEMENT (2" A.C. (1/2" MIX) OVER 6" A.B.C. OVER COMPACTED SUBGRADE).
- ⑥ CONSTRUCT CONCRETE SIDEWALK (CITY OF PHOENIX STANDARD DETAIL NO. P1230). SEE LANDSCAPE DRAWINGS FOR SCORING AND FINISH.
- ⑦ INSTALL THICKENED PAVEMENT EDGE (MAG STANDARD DETAIL 201, TYPE B).
- ⑧ CONSTRUCT CONCRETE VALLEY GUTTER AND APRON (MAG STANDARD DETAIL NO. 240). WIDTH TO BE 3'.
- ⑨ CONSTRUCT SEVEN INCH (7") THICK 4,000 P.S.I. (AT 28 DAYS) CONCRETE PAVING OR CONCRETE FIRE LANE.
- ⑩ INSTALL DRAIN THROUGH LANDSCAPE AREA. (SEE DETAIL ON SHEET C-3).
- ⑪ INSTALL CONCRETE DRIVEWAY ENTRANCE (MAG STANDARD DETAIL 250-1).
- ⑫ STRAIGHT GRADE FROM 1" BELOW TOP OF CONCRETE SIDEWALK OR CURB AT A 5:1 MAXIMUM SLOPE TO MATCH EXISTING GRADE.
- ⑬ CONSTRUCT CONCRETE SPLASHPAD (SEE DETAIL SHEET C-3).
- ⑭ INSTALL TRASH ENCLOSURE (SEE ARCHITECTURAL DRAWINGS FOR DETAILS).
- ⑮ PAINT STRIPE PARKING LOT TO THE ALIGNMENTS INDICATED, INCLUDING THE PAINTING OF ALL HANDICAP SYMBOLS AND WALKWAYS, DIRECTIONAL ARROWS, PARKING STALLS, DROP-OFF AREAS, ETC. (TYPICAL).
- ⑯ INSTALL FIRE LANE SIGN PER CITY OF PHOENIX AND STATE FIRE MARSHAL'S REQUIREMENTS. POST AND BASE PER MAG STANDARD DETAIL NO. 131, TYPE 'B'.
- ⑰ INSTALL 12" SIDEWALK SCUPPER (MAG STANDARD DETAIL NO. 206).
- ⑱ MATCH EXISTING GRADE.
- ⑲ SEE LANDSCAPE PLANS FOR FENCING AND GATES.
- ⑳ INSTALL CONCRETE LANDSCAPE CURB (SEE LANDSCAPE PLANS FOR DETAILS).
- ㉑ INSTALL HANDICAP PARKING SIGN PER CITY OF PHOENIX AND ADA REQUIREMENTS. POST AND BASE PER MAG STANDARD DETAIL NO. 131, TYPE 'B'. (TOP OF SIGN SHALL BE 6' ABOVE GRADE). TYPICAL AT EACH HANDICAP SPACE.
- ㉒ INSTALL PRECAST SAFETY CURB (MAG STANDARD DETAIL NO. 150, TYPE B-3).
- ㉓ INSTALL CURB TERMINATION (MAG STANDARD DETAIL NO. 222).
- ㉔ INSTALL "DO NOT ENTER" SIGN (M.U.T.C.D. R5-1, 36" X 36", WITH POST AND BASE PER MAG STANDARD DETAIL NO. 131, TYPE 'B' (TOP OF SIGN SHALL BE 6' ABOVE GRADE)).

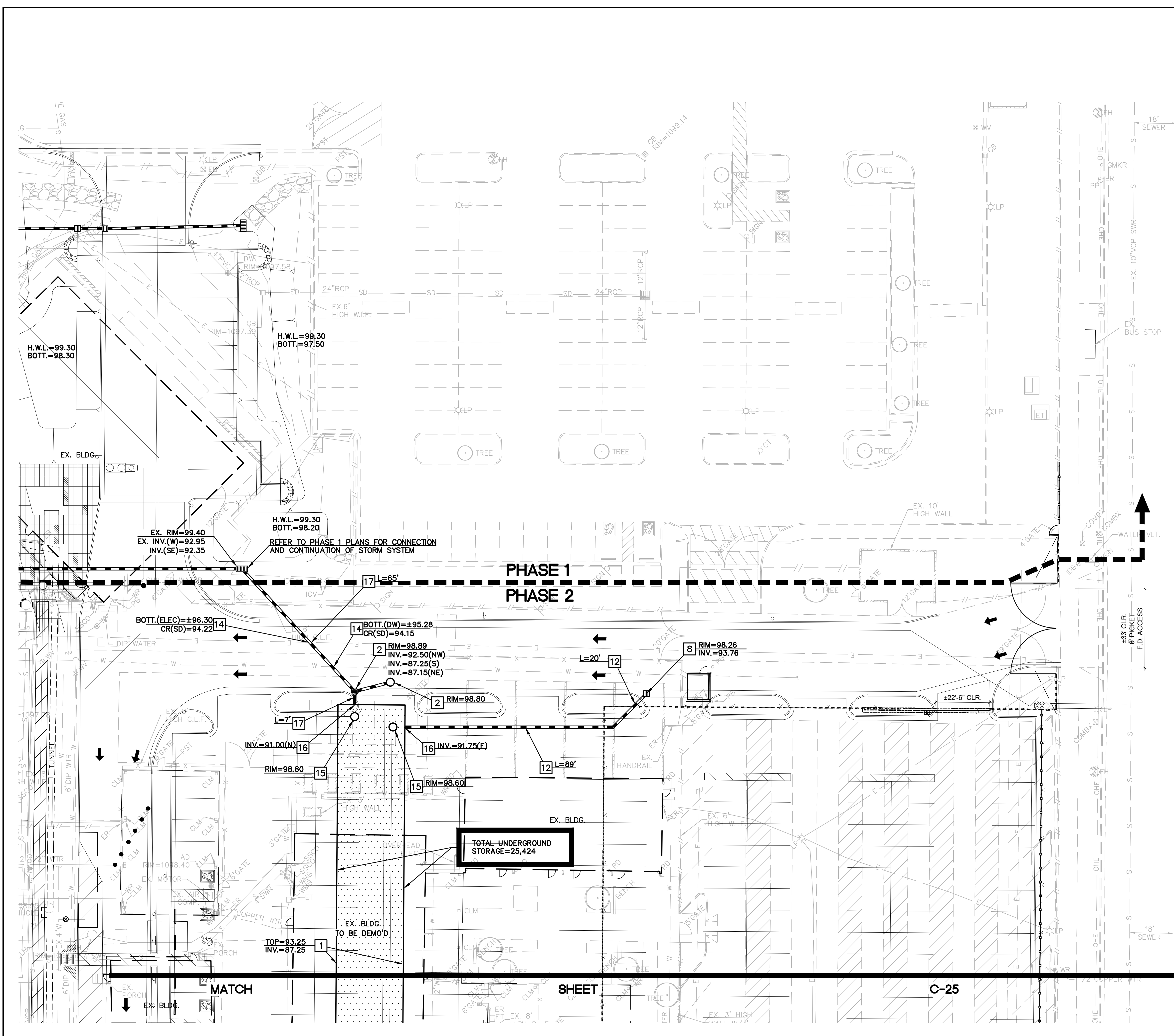


METRO TECH - PH2
PHOENIX UNION HIGH SCHOOL DISTRICT

BIDDING SET
05-30-25
Revisions

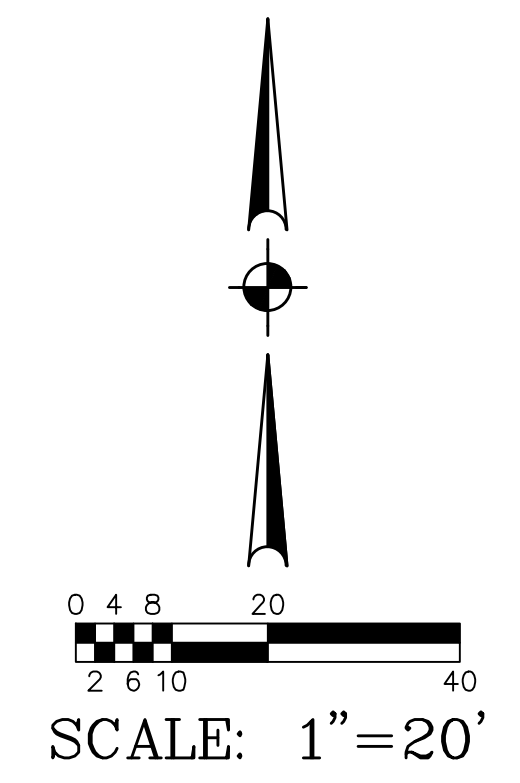
4503366B





STORM DRAIN CONSTRUCTION NOTES:

- 1 INSTALL STORMBRIX-900SD (HS-20 LOADING) STORMWATER RETENTION SYSTEM PER MANUFACTURER'S DETAILS (SEE SHEET C-3).
- 2 CONSTRUCT DUAL CHAMBER DRYWELL (SEE DETAIL ON SHEET C-3).
- 3 CONNECT NEW STORM DRAIN PIPE TO EXISTING STORM DRAIN MANHOLE WITH NECESSARY AND APPROPRIATE FITTINGS. ADJUST MANHOLE RIM TO FINISHED GRADE.
- 4 CONNECT TO BUILDING ROOF DRAIN LINE WITH NECESSARY AND APPROPRIATE FITTINGS. SEE PLUMBING DRAWINGS FOR CONTINUATION.
- 5 INSTALL STORM DRAIN CLEANOUT (SEE DETAIL ON SHEET C-3).
- 6 INSTALL STORM DRAIN AREA DRAIN (SEE DETAIL ON SHEET C-3)
- 7 INSTALL CATCH BASIN PER MAG STANDARD DETAIL 535 MODIFIED WITH RIP RAP BOTTOM INSTEAD OF CONCRETE, OR APPROVED EQUAL .
- 8 INSTALL SINGLE GRATE CATCH BASIN (MAG STANDARD DETAIL 537 'G').
- 9 INSTALL 6" H.D.P.E. DRAINAGE PIPE WITH SMOOTH INTERIOR AND 10.8 P.S.I. JOINTS.
- 10 INSTALL 12" H.D.P.E. DRAINAGE PIPE WITH SMOOTH INTERIOR AND 10.8 P.S.I. JOINTS.
- 11 INSTALL 15" H.D.P.E. DRAINAGE PIPE WITH SMOOTH INTERIOR AND 10.8 P.S.I. JOINTS.
- 12 INSTALL 18" H.D.P.E. DRAINAGE PIPE WITH SMOOTH INTERIOR AND 10.8 P.S.I. JOINTS.
- 13 INSTALL DOUBLE GRATE CATCH BASIN TYPE 'G' (MAG STANDARD DETAIL 537).
- 14 CONTRACTOR TO POTHOLE AND VERIFY LOCATION AND ELEVATION OF EXISTING UTILITY PRIOR TO INSTALLATION OF STORM DRAIN. EXISTING UTILITY TO BE PROTECTED IN PLACE. CONTRACTOR TO NOTIFY ENGINEER IF THERE IS A CONFLICT WITH THE EXISTING LINE.
- 15 INSTALL STORMBRIX REMOTE ACCESS COVER, VENTED, PER MANUFACTURER'S DETAILS (SEE SHEET C-3).
- 16 CONNECT TO PROPOSED STORM WATER RETENTION SYSTEM PER MANUFACTURER'S SPECIFICATIONS.
- 17 INSTALL 24" H.D.P.E. DRAINAGE PIPE WITH SMOOTH INTERIOR AND 10.8 P.S.I. JOINTS.
- 18 INSTALL 48" CONCRETE MANHOLE AND BASE (MAG STANDARD DETAIL 520 AND 522)
- 19 INSTALL SINGLE GRATE CATCH BASIN TYPE 'H' (MAG STANDARD DETAIL 538 AND 539)



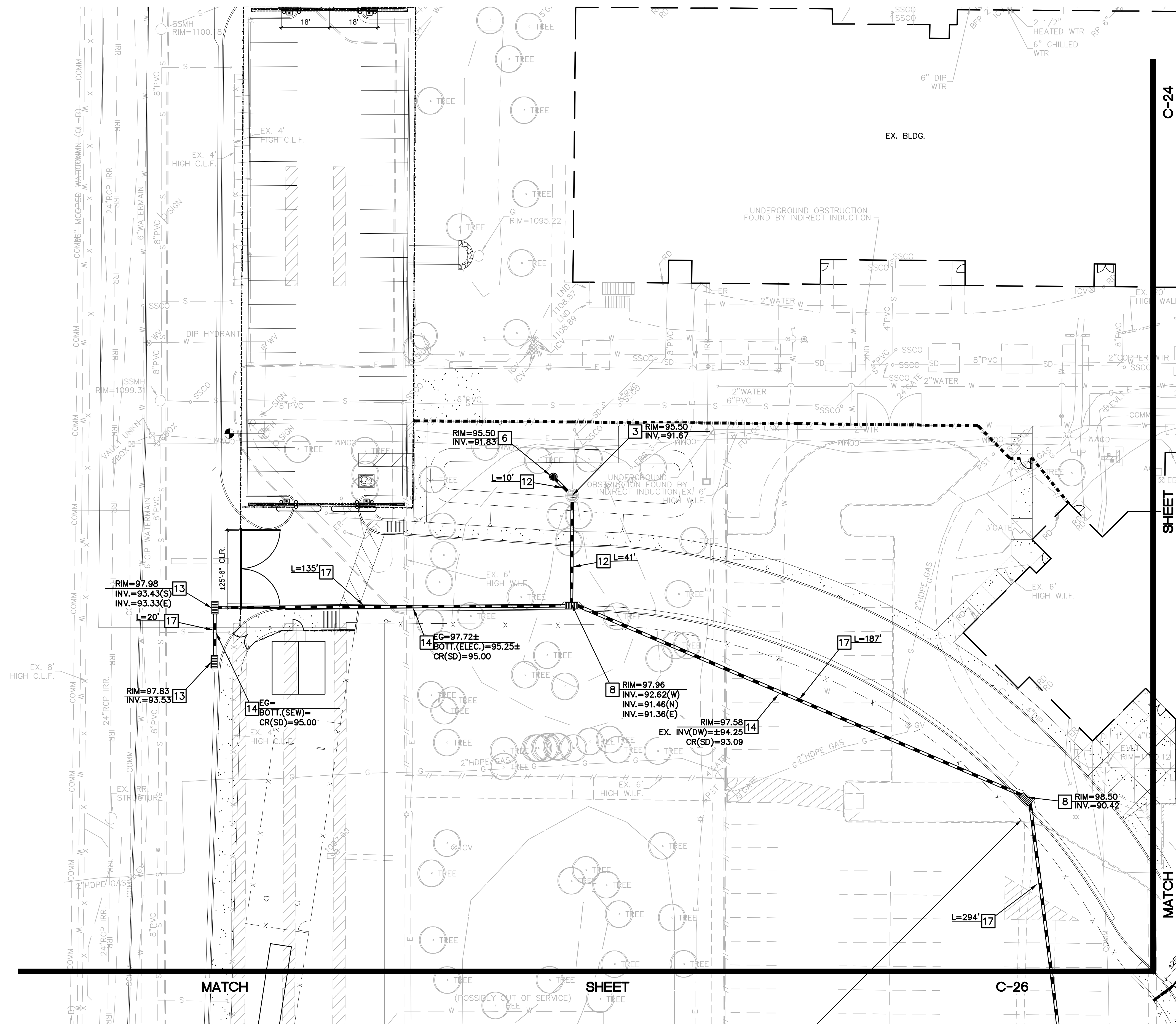
TOTAL UNDERGROUND STORAGE=25,424

MATCH

SHEET

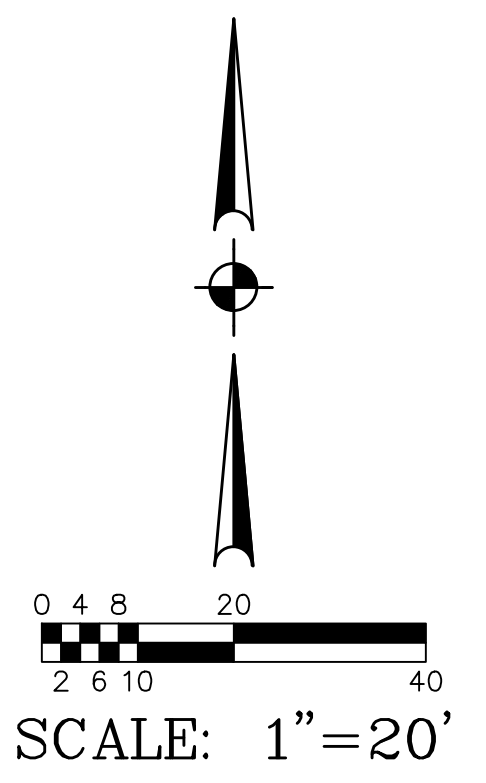
C-25





STORM DRAIN CONSTRUCTION NOTES:

- 1 INSTALL STORMBRIXX-900SD (HS-20 LOADING) STORMWATER RETENTION SYSTEM PER MANUFACTURER'S DETAILS (SEE SHEET C-3).
- 2 CONSTRUCT DUAL CHAMBER DRYWELL (SEE DETAIL ON SHEET C-3).
- 3 CONNECT NEW STORM DRAIN PIPE TO EXISTING STORM DRAIN MANHOLE WITH NECESSARY AND APPROPRIATE FITTINGS. ADJUST MANHOLE RIM TO FINISHED GRADE.
- 4 CONNECT TO BUILDING ROOF DRAIN LINE WITH NECESSARY AND APPROPRIATE FITTINGS. SEE PLUMBING DRAWINGS FOR CONTINUATION.
- 5 INSTALL STORM DRAIN CLEANOUT (SEE DETAIL ON SHEET C-3).
- 6 INSTALL STORM DRAIN AREA DRAIN (SEE DETAIL ON SHEET C-3)
- 7 INSTALL CATCH BASIN PER MAG STANDARD DETAIL 535 MODIFIED WITH RIP RAP BOTTOM INSTEAD OF CONCRETE, OR APPROVED EQUAL .
- 8 INSTALL SINGLE GRATE CATCH BASIN (MAG STANDARD DETAIL 537 TYPE 'G').
- 9 INSTALL 6" H.D.P.E. DRAINAGE PIPE WITH SMOOTH INTERIOR AND 10.8 P.S.I. JOINTS.
- 10 INSTALL 12" H.D.P.E. DRAINAGE PIPE WITH SMOOTH INTERIOR AND 10.8 P.S.I. JOINTS.
- 11 INSTALL 15" H.D.P.E. DRAINAGE PIPE WITH SMOOTH INTERIOR AND 10.8 P.S.I. JOINTS.
- 12 INSTALL 18" H.D.P.E. DRAINAGE PIPE WITH SMOOTH INTERIOR AND 10.8 P.S.I. JOINTS.
- 13 INSTALL DOUBLE GRATE CATCH BASIN TYPE 'G' (MAG STANDARD DETAIL 537).
- 14 CONTRACTOR TO POTHOLE AND VERIFY LOCATION AND ELEVATION OF EXISTING UTILITY PRIOR TO INSTALLATION OF STORM DRAIN. EXISTING UTILITY TO BE PROTECTED IN PLACE. CONTRACTOR TO NOTIFY ENGINEER IF THERE IS A CONFLICT WITH THE EXISTING LINE.
- 15 INSTALL STORMBRIXX REMOTE ACCESS COVER, VENTED, PER MANUFACTURER'S DETAILS (SEE SHEET C-3).
- 16 CONNECT TO PROPOSED STORM WATER RETENTION SYSTEM PER MANUFACTURER'S SPECIFICATIONS.
- 17 INSTALL 24" H.D.P.E. DRAINAGE PIPE WITH SMOOTH INTERIOR AND 10.8 P.S.I. JOINTS.
- 18 INSTALL 48" CONCRETE MANHOLE AND BASE (MAG STANDARD DETAIL 520 AND 522)
- 19 INSTALL SINGLE GRATE CATCH BASIN TYPE 'H' (MAG STANDARD DETAIL 538 AND 539)



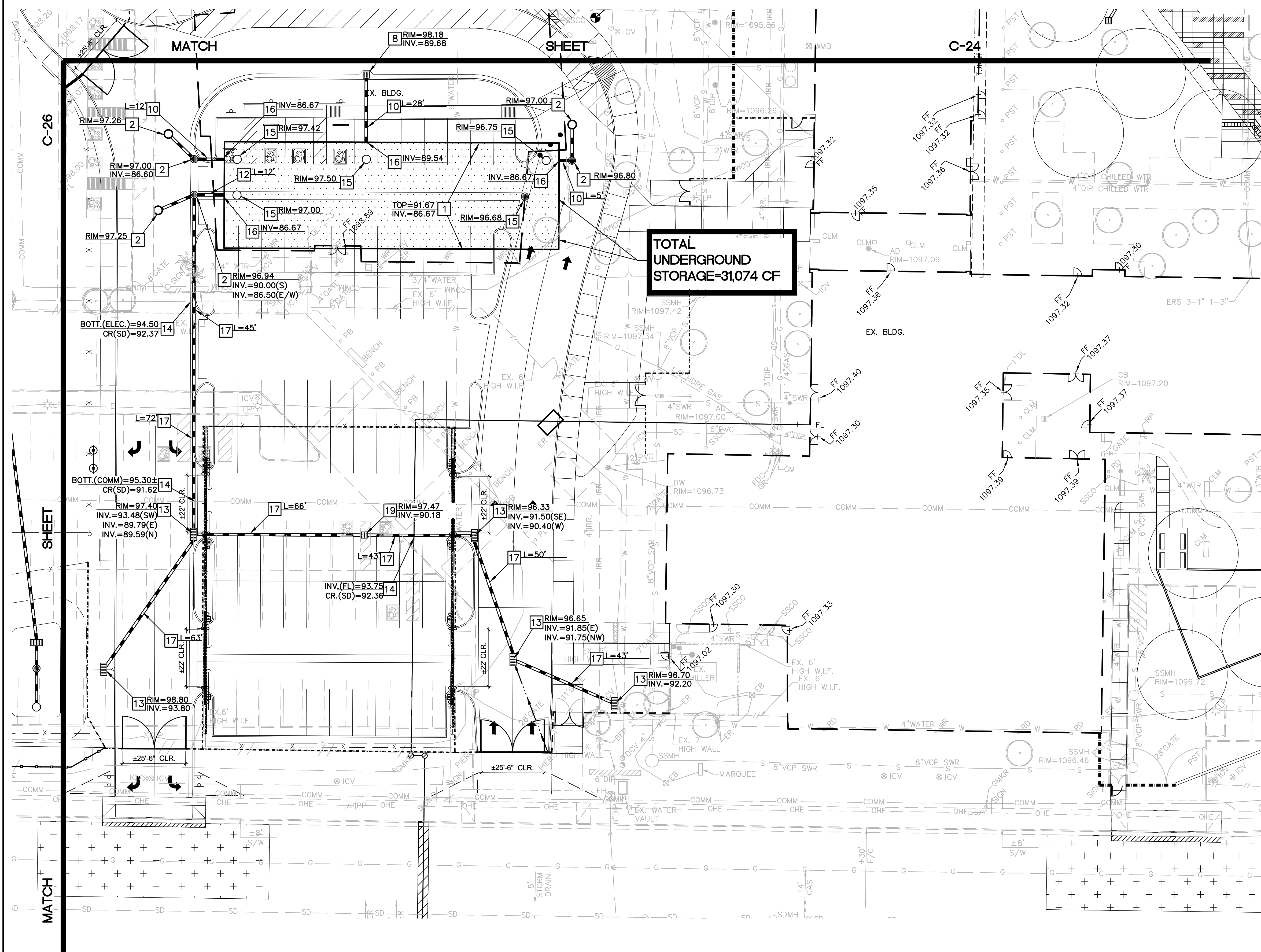
Bowman
 Bowman Consulting Group Ltd
 1600 N. Desert Drive, Ste 210
 Tempe, Arizona 85288
 Phone: (480) 629-8830
 www.bowman.com

METRO TECH - PH2
 PHOENIX UNION HIGH SCHOOL DISTRICT

BIDDING SET
 05-30-25
 Revisions

4503366B





STORM DRAIN CONSTRUCTION NOTES:

- 1 INSTALL STORMBRIX-900SD (HS-20 LOADING) STORMWATER RETENTION SYSTEM PER MANUFACTURER'S DETAILS (SEE SHEET C-3).
- 2 CONSTRUCT DUAL CHAMBER DRYWELL (SEE DETAIL ON SHEET C-3).
- 3 CONNECT NEW STORM DRAIN PIPE TO EXISTING STORM DRAIN MANHOLE WITH NECESSARY AND APPROPRIATE FITTINGS. ADJUST MANHOLE RIM TO FINISHED GRADE.
- 4 CONNECT TO BUILDING ROOF DRAIN LINE WITH NECESSARY AND APPROPRIATE FITTINGS. SEE PLUMBING DRAWINGS FOR CONTINUATION.
- 5 INSTALL STORM DRAIN CLEANOUT (SEE DETAIL ON SHEET C-3).
- 6 INSTALL STORM DRAIN AREA DRAIN (SEE DETAIL ON SHEET C-3)
- 7 INSTALL CATCH BASIN PER MAG STANDARD DETAIL 535 MODIFIED WITH RIP RAP BOTTOM INSTEAD OF CONCRETE, OR APPROVED EQUAL .
- 8 INSTALL SINGLE GRATE CATCH BASIN (MAG STANDARD DETAIL 537 TYPE 'G').
- 9 INSTALL 6" H.D.P.E. DRAINAGE PIPE WITH SMOOTH INTERIOR AND 10.8 P.S.I. JOINTS.
- 10 INSTALL 12" H.D.P.E. DRAINAGE PIPE WITH SMOOTH INTERIOR AND 10.8 P.S.I. JOINTS.
- 11 INSTALL 15" H.D.P.E. DRAINAGE PIPE WITH SMOOTH INTERIOR AND 10.8 P.S.I. JOINTS.
- 12 INSTALL 18" H.D.P.E. DRAINAGE PIPE WITH SMOOTH INTERIOR AND 10.8 P.S.I. JOINTS.
- 13 INSTALL DOUBLE GRATE CATCH BASIN TYPE 'G' (MAG STANDARD DETAIL 537).
- 14 CONTRACTOR TO POTHOLE AND VERIFY LOCATION AND ELEVATION OF EXISTING UTILITY PRIOR TO INSTALLATION OF STORM DRAIN. EXISTING UTILITY TO BE PROTECTED IN PLACE. CONTRACTOR TO NOTIFY ENGINEER IF THERE IS A CONFLICT WITH THE EXISTING LINE.
- 15 INSTALL STORMBRIX REMOTE ACCESS COVER, VENTED, PER MANUFACTURER'S DETAILS (SEE SHEET C-3).
- 16 CONNECT TO PROPOSED STORM WATER RETENTION SYSTEM PER MANUFACTURER'S SPECIFICATIONS.
- 17 INSTALL 24" H.D.P.E. DRAINAGE PIPE WITH SMOOTH INTERIOR AND 10.8 P.S.I. JOINTS.
- 18 INSTALL 48" CONCRETE MANHOLE AND BASE (MAG STANDARD DETAIL 520 AND 522)
- 19 INSTALL SINGLE GRATE CATCH BASIN TYPE 'H' (MAG STANDARD DETAIL 538 AND 539)

